



304 NON-MAGNETIC AND NON-CORRODING STAINLESS STEEL
PROFESSIONAL ACCESSORIES FOR PROFESSIONAL DRIVERS

**OUT WORK.
OUT PLAY.
OUT DRIVE.
OUT LAST.
OUT SHINE.**

304
STAINLESS
STEEL

CONTENTS


HX Series	5-14
LT Series	15-22
Additional Accessories	23-30
Lights, Bezels & Wire Harness	4
Custom Dealership Posters	31

CUSTOMER SERVICE CONTACT

TOLL FREE:
1-877-884-8555

EMAIL US AT:
inquiries@dietersaccessories.com

ONLINE AT:
www.dietersaccessories.com

 panelite_by_dieters

 @Panelite_Dieter

 www.facebook.com/PaneliteByDieters



WELCOME TO
THE BIG LEAGUES OF
TRUCK ACCESSORIES



**CRAFTED IN
NORTH AMERICA**

2 YEAR WARRANTY ON ALL PRODUCTS

**OUT WORK.
OUT PLAY.
OUT DRIVE.
OUT LAST.
OUT SHINE.**

Dieter's has been manufacturing high quality truck accessories since 1976! Our legacy started with a highly skilled tradesman and a few close friends who felt their trucks deserved that custom touch. Fast forward 40 years, and Dieter's has become the largest, most trusted and most OEM awarded name in high quality stainless steel accessories for today's Big Rigs. Our truck accessories don't just belong in show-and-shines, they belong on the highways and backroads of North America.

WHAT'S THIS MEAN FOR YOU?

Listening to the customer and delivering a product that is worthy of your hard earned dollars. Dieter's has become the high quality accessory manufacturer of choice for North America's heavy truck OEM's. We use only the highest quality, non-magnetic 304 stainless steel and back it up with award winning customer service. In fact, we are so confident in our products, we stand behind them for a full two years. Try finding that with one of our competitors!

THE RESULT?

Highest quality stainless steel accessories available at over 2,000 dealerships throughout North America. Outwork, Outplay, Outlast with our high quality custom products for today's professional drivers.

L
I
G
H
T
S

H
X
S
E
R
I
E
S



DN2208

DN2214

DN2211

DN2217

DN2209

PL00212236*

PL00212335*

PL00212238*

PL00212706*

PL00212900*

PL00212901*

PL00212906*

DN2195

DN2196

CHROMED PLASTIC LIGHT BEZELS

Add that finished chrome look to your round and oval lights. Available with or without visor. Sold individually.

WITHOUT VISOR		WITH VISOR	
2" ROUND	DN2191	2" ROUND WITH VISOR	DN2200
2.5" ROUND	DN2192	2.5" ROUND WITH VISOR	DN2201
4" ROUND	DN2193	4" ROUND WITH VISOR	DN2202
6" OVAL	DN2194	6" OVAL WITH VISOR	DN2203
M1 BEZEL ONLY	PL00212327*		
M3 BEZEL ONLY	PL00212227*		
M5 BEZEL ONLY	PL00212727*		
3/4" ROUND BEZEL ONLY (10 PIECES)	PL00212904*		



DN2194



CLOSE UP OF PLUGS

CONTINUOUS WIRING

Bulk wiring harness by the roll. Available in 6" spacing (200 plugs) or 12" spacing (100 plugs).

6" PLUG SPACING (200 PLUGS)	DN2205
12" PLUG SPACING (100 PLUGS)	DN2204

LIGHT TYPES

With chrome bezel. Hardware included. Sold individually.

X2AG2 LED	
AMBER (X2AG2)	DN2208
RED (X2RG2)	DN2211
AMBER CLEAR (X2ACG2)	DN2206
RED CLEAR (X2RCG2)	DN2209
PROSTAR CAB/SLEEPER/EXTENDER (X2AG2 LED LIGHT WITH BULLET PLUGS)	DN2322
X3AG2 LED	
AMBER (X3AG2)	DN2214
RED (X3RG2)	DN2217
AMBER CLEAR (X3ACG2)	DN2212
RED CLEAR (X3RCG2)	DN2215
2" ROUND STARBURST LED - CHROME BEZEL NOT INCLUDED	
AMBER	DN2196
RED	DN2195
M1 LED - .180 BULLETS & BEZEL	
M1 AMBER LED	PL00212335*
M1 AMBER CLEAR LED	PL00212336*
M1 LED - .180 BULLETS & NO BEZEL	
M1 AMBER LED	PL00212355*
M1 AMBER CLEAR LED	PL00212356*
M3 LED - .180 BULLETS & BEZEL	
M3 AMBER LED	PL00212235*
M3 AMBER CLEAR LED	PL00212236*
M3 RED LED	PL00212237*
M3 RED CLEAR LED	PL00212238*
M3 LED - .180 BULLETS & NO BEZEL	
M3 AMBER LED	PL00212255*
M3 AMBER CLEAR LED	PL00212256*
M3 RED LED	PL00212257*
M3 RED CLEAR LED	PL00212258*
M5 LED - .180 BULLETS & BEZEL	
M5 AMBER LED	PL00212704*
M5 AMBER CLEAR LED	PL00212706*
M5 LED - .180 BULLETS & NO BEZEL	
M5 AMBER LED	PL00212708*
M5 AMBER CLEAR LED	PL00212710*
3/4" ROUND LED - .180 BULLETS WITH GROMMET & BEZEL	
3/4" ROUND AMBER LED	PL00212900*
3/4" ROUND AMBER CLEAR LED	PL00212901*
3/4" ROUND LED - .180 BULLETS WITH GROMMET (FOR USE IN UNDERLIT PRODUCT)	
3/4" ROUND AMBER CLEAR LED	PL00212906*

*Available under the Panelite by Dieter's brand, through direct ship program. www.panelite.com





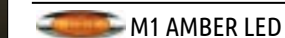
DN2356

SUNVISORS

There are lots of places you want to soak in the sun - but your cab isn't one of them. Our extended sunvisors help keep the cab cooler while reducing eye strain. OEM replacement. Made of durable stainless steel. Utilizes existing factory brackets. Hardware included.

5 M1 LED OEM REPLACEMENT 13" FACE DN2355

5 M1 LED CLEAR LENS OEM REPLACEMENT 13" FACE DN2356



M1 AMBER LED



M1 AMBER CLEAR LED



DN2356



DN2338

BUG DEFLECTORS

Helps protect the hood and windshield from rocks and road debris. Mounts behind grille. Drilling of mounting holes required. All mounting hardware included. Constructed of high-quality 304 stainless steel. Built in hood tilt handle. LIFETIME GUARANTEE AGAINST BREAKAGE. **For 2016-2020 models only.**

HX615, HX620 (BUILT IN HOOD TILT HANDLE) DN2338

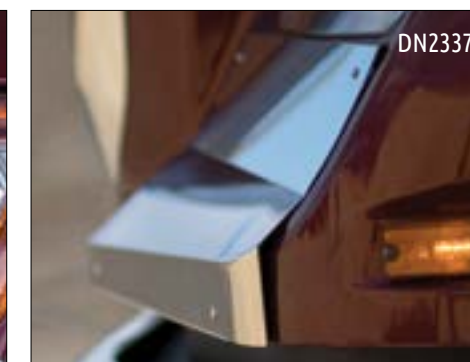
HX520 DN2006



DN2006



DN2337



DN2337



DN2378

FENDER GUARDS

The best defense against road debris and the effects of high mileage wear and tear. These below headlight fender guards attach using supplied hardware. Sold in pairs.

For 2016-2020 models only.

HX615, HX620 DN2337

HX520 DN2378



DN2340

CAB SKIRTS - HX615, HX620

Available for both HX615 and HX620 models - for single exhaust or dual exhaust configurations. Sold in pairs. Driver side skirting has a cutout for the block heater. Lights and hardware included. Skirts measure 4" wide.

HX615 - DUAL EXHAUST	
PLAIN	DN2351
M1 AMBER (3) LED LIGHTS	DN2350
M1 AMBER CLEAR (3) LED LIGHTS	DN2349
HX615 - SINGLE EXHAUST	
PLAIN	DN2348
M1 AMBER (3) LED LIGHTS	DN2347
M1 AMBER CLEAR (3) LED LIGHTS	DN2346
HX620 - DUAL EXHAUST	
PLAIN	DN2342
M1 AMBER (3) LED LIGHTS	DN2341
M1 AMBER CLEAR (3) LED LIGHTS	DN2340
HX620 - SINGLE EXHAUST	
PLAIN	DN2345
M1 AMBER (3) LED LIGHTS	DN2344
M1 AMBER CLEAR (3) LED LIGHTS	DN2343



DN2347



DN2350



DN2340

M1 AMBER LED M1 AMBER CLEAR LED



DN2389



DN2387 WITH DN2389

CAB SKIRTS - HX520

For HX520 models with dual exhaust. Sold in pairs. Driver side skirting has cutout for block heater. Lights, harnesses and hardware included. Skirts measure 4" wide.

HX520 - DUAL EXHAUST	
PLAIN	DN2398
M1 AMBER (4) LED LIGHTS	DN2389
M1 AMBER CLEAR (4) LED LIGHTS	DN2390
M5 AMBER (6) LED LIGHTS	DN2399
M5 AMBER CLEAR (6) LED LIGHTS	DN2400
3/4" ROUND AMBER (8) LED LIGHTS	DN2401
3/4" ROUND AMBER CLEAR (8) LED LIGHTS	DN2402
UNDERLIT 3/4" ROUND AMBER (6) LED LIGHTS	DN2403

HOOD EXTENSION PANELS

For HX520 models. Sold in pairs. Lights, harnesses and hardware included.

PLAIN	DN2392
M1 AMBER LED LIGHTS (3)	DN2387
M1 AMBER CLEAR LED LIGHTS (3)	DN2388
M5 AMBER (4) LED LIGHTS	DN2393
M5 AMBER CLEAR (4) LED LIGHTS	DN2394
3/4" ROUND AMBER (4) LED LIGHTS	DN2395
3/4" ROUND AMBER CLEAR (4) LED LIGHTS	DN2396
UNDERLIT 3/4" ROUND AMBER (3) LED LIGHTS	DN2397

M1 AMBER LED M1 AMBER CLEAR LED
M5 AMBER LED M5 AMBER CLEAR LED
3/4" ROUND AMBER LED 3/4" ROUND AMBER CLEAR LED

HX

H
X

S

E

R

I

E

S

S

S

S



DN2340 WITH DN2407

SLEEPER SKIRTS

For both HX520 and HX620 models. Sold in pairs. Available with and without extenders. Lights, harnesses and hardware included.

51" SLEEPERS WITH EXTENDERS	
PLAIN	DN2405
M1 AMBER (4) LED LIGHTS	DN2406
M1 AMBER CLEAR (4) LED LIGHTS	DN2407
M5 AMBER (4) LED LIGHTS	DN2408
M5 AMBER CLEAR (4) LED LIGHTS	DN2409
3/4" ROUND AMBER (4) LED LIGHTS	DN2410
3/4" ROUND AMBER CLEAR (4) LED LIGHTS	DN2411
UNDERLIT 3/4" ROUND AMBER (3) LED LIGHTS	DN2412



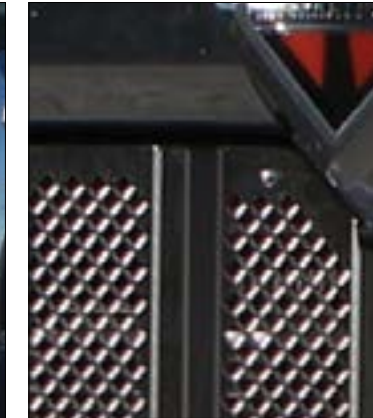
DN2405



DN2405



DN2404



FRONT GRILLE

Add the bold look of chrome to the entire grille. One piece mirror finish stainless steel replaces the OEM grille. Cutouts are in the International diamond shape. Sold individually. Hardware included.

HX520	DN2391
HX620	DN2404



DEF TANK COVER

Adds shine to the def tank on the driver side for HX520 models. Sold individually. Designed for the 9 Gallon DEF tank.

DEF TANK COVER (9 GALLON) - HX520	DN2386
-----------------------------------	--------



FRESH AIR INTAKE COVER

Sold individually, the stainless steel cover is designed to cover the passenger side OEM painted panel. Attaches using supplied 3M two-sided tape. **For 2016-2020 models only.**

HX620, HX520 - PASSENGER	DN2334
--------------------------	--------

HX

H
X

S

E

R

I

E

S

S

S

S



DN2339



DN2518

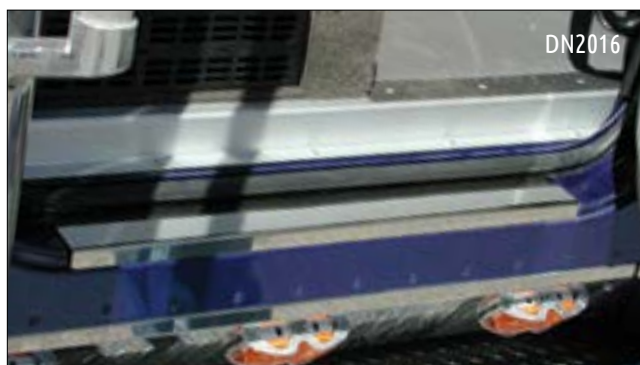


DN2339

BEACON LIGHT BRACKET

Mounts to the rear portion of the cab roof. Light bracket made of durable 304 non-magnetic, non-directional stainless steel to stand up against the elements. Sold individually. Hardware and light not supplied

BEACON LIGHT BRACKET HX615, HX515, HX620, HX520	DN2339
BEACON LIGHT BRACKET FOR EXTENDERS HX615, HX515, HX620, HX520	DN2518



DN2016



DN2245

DOOR SILL/SCUFF PLATES

Door sill/scuff plates designed for International models. Sold in pairs. Each plate measures 23.5" long by 2.5" wide by 0.25" high. Attaches using supplied 3M two-sided tape.

PLAIN	DN2016
WITH ETCHED INTERNATIONAL	DN2245



STEP COVER

Designed for HX620 models passenger side. Replaces existing OEM cover with a durable stainless steel version. Sold as a set, the cover consists of front piece, side piece and back piece. Attaches using supplied hardware.

HX620, HX520 STEP COVER - PASSENGER SIDE	DN2336
HX620, HX520 STEP COVER - PASSENGER SIDE - SINGLE DPF	DN2367

AIR CLEANER LIGHT BARS

Accentuates air cleaners. For use with air cleaner fairings. Lights, harnesses and hardware are included. Sold in pairs. **For 2016-2020 models only.**

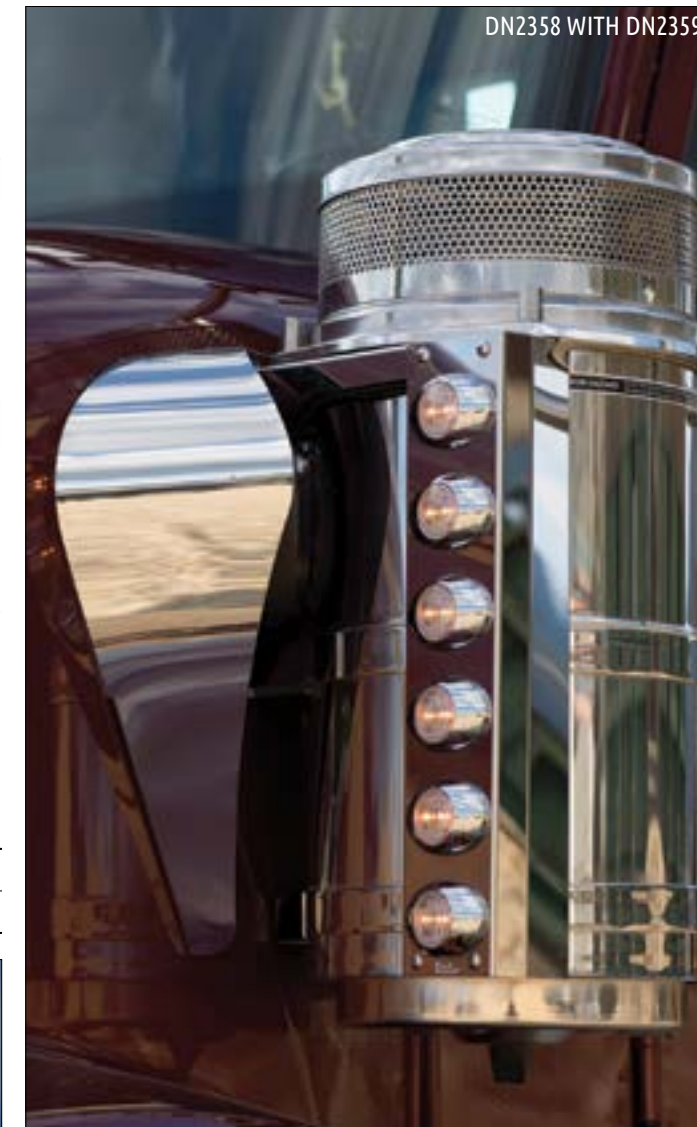
FRONT	
HX620 - M3 AMBER LED (6)	DN2353*
HX620 - M3 AMBER CLEAR LED (6)	DN2358*
HX520 - M3 AMBER LED (6)	DN2382*
HX520 - M3 AMBER CLEAR LED (6)	DN2383*
*TO BE USED WITH AIR CLEANER FAIRINGS/SHROUDS	
REAR	
HX620 - M3 RED LED (6)	DN2354
HX620 - M3 RED CLEAR LED (6)	DN2357
HX520 - M3 RED LED (6)	DN2384
HX520 - M3 RED CLEAR LED (6)	DN2385

- M3 AMBER LED M3 AMBER CLEAR LED
- M3 RED LED M3 RED CLEAR LED

AIR CLEANER FAIRING

Conceals the air intake hoses. Attaches to the side of the hood in front of the air cleaner. Sold in pairs. Hardware included. **For 2016-2020 models only.**

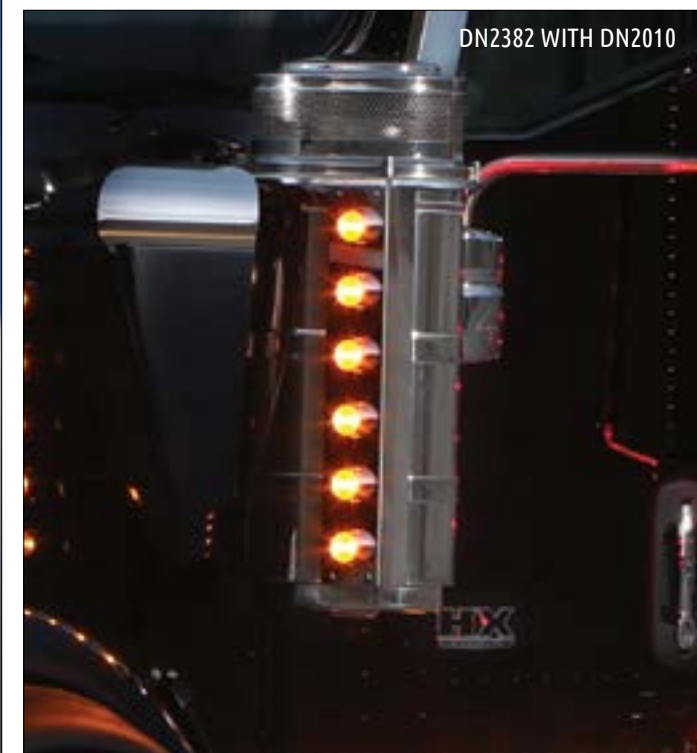
HX620	DN2359
HX520	DN2010



DN2358 WITH DN2359



DN2357



DN2382 WITH DN2010



DN2352



DN2197

UNDER BUMPER MOUNT SWING PLATE

High quality 304-stainless 18-gauge bumper face swing plate. Holds 1 license plate. Tag bezel and hardware included. Sold individually.

HX615, HX620 DN2197

HX615, HX620 MODELS - 37" WIDE, TAPERED ENDS DN2352



DOOR WINDOW DEFLECTOR

The door window deflectors measure 20.5" x 3.25" wide. No hardware is required, attaches using supplied 3M two-sided tape. Sold in pairs.

HX SERIES MODELS DN2003



CHROME CLIMATE CONTROL KNOBS

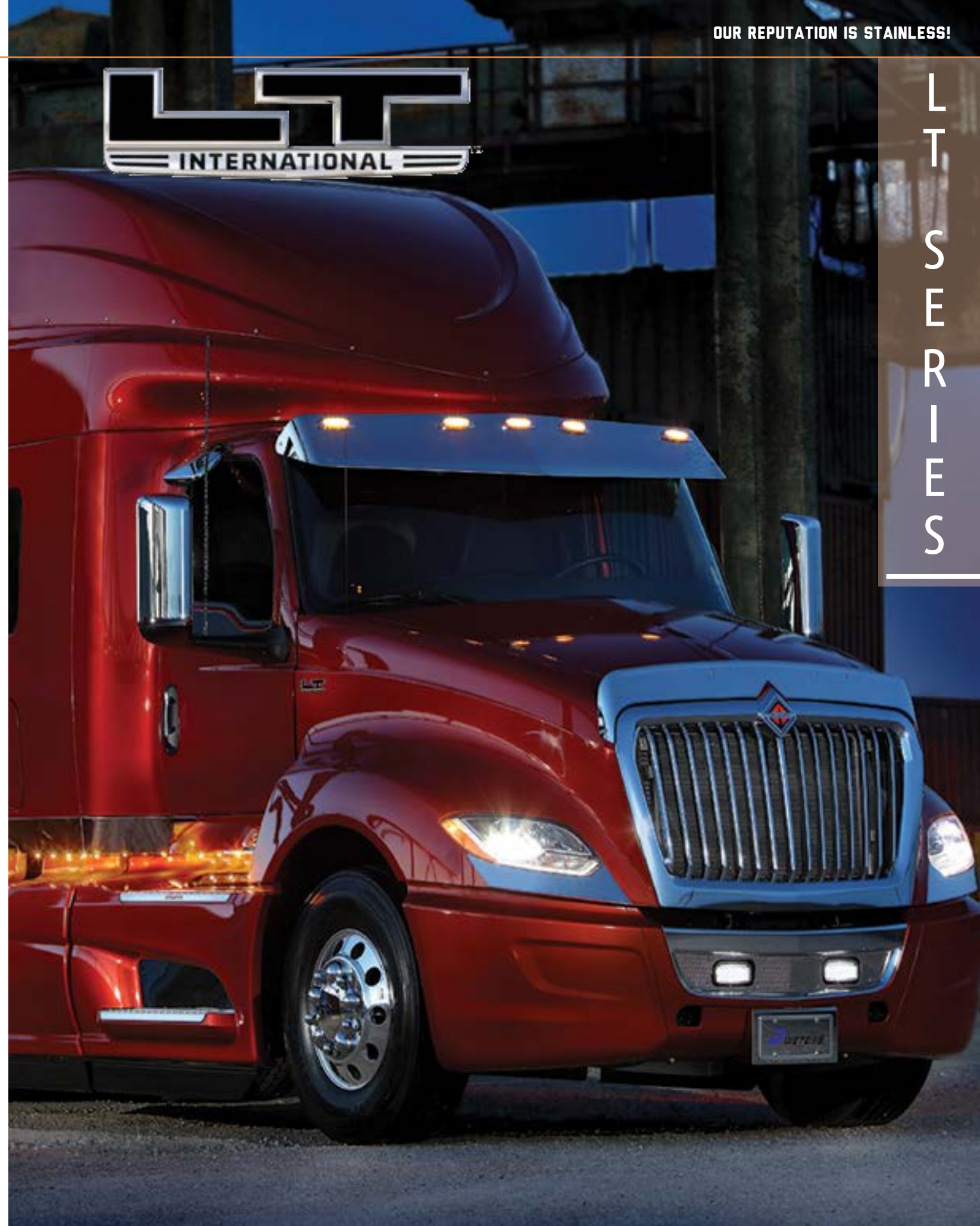
For 9000 and HX series models. Sold as a set of 3. Light indicator window. Replace OEM climate control knobs. Chromed plastic.

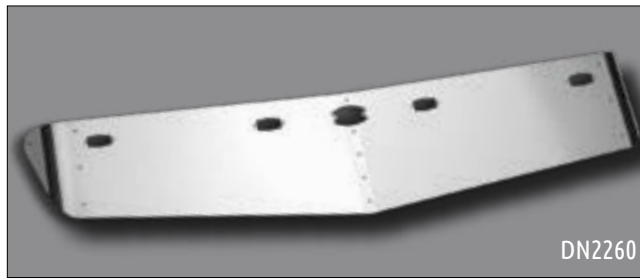
HX & 9900 SERIES DN2247

LOWER MIRROR ARM BRACKET COVERS

Chromed plastic OEM replacement features embossed logo. Snaps in place of original cover. Sold in pairs.

HX SERIES DN2255





DN2260

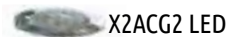
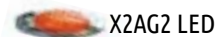


DN2241

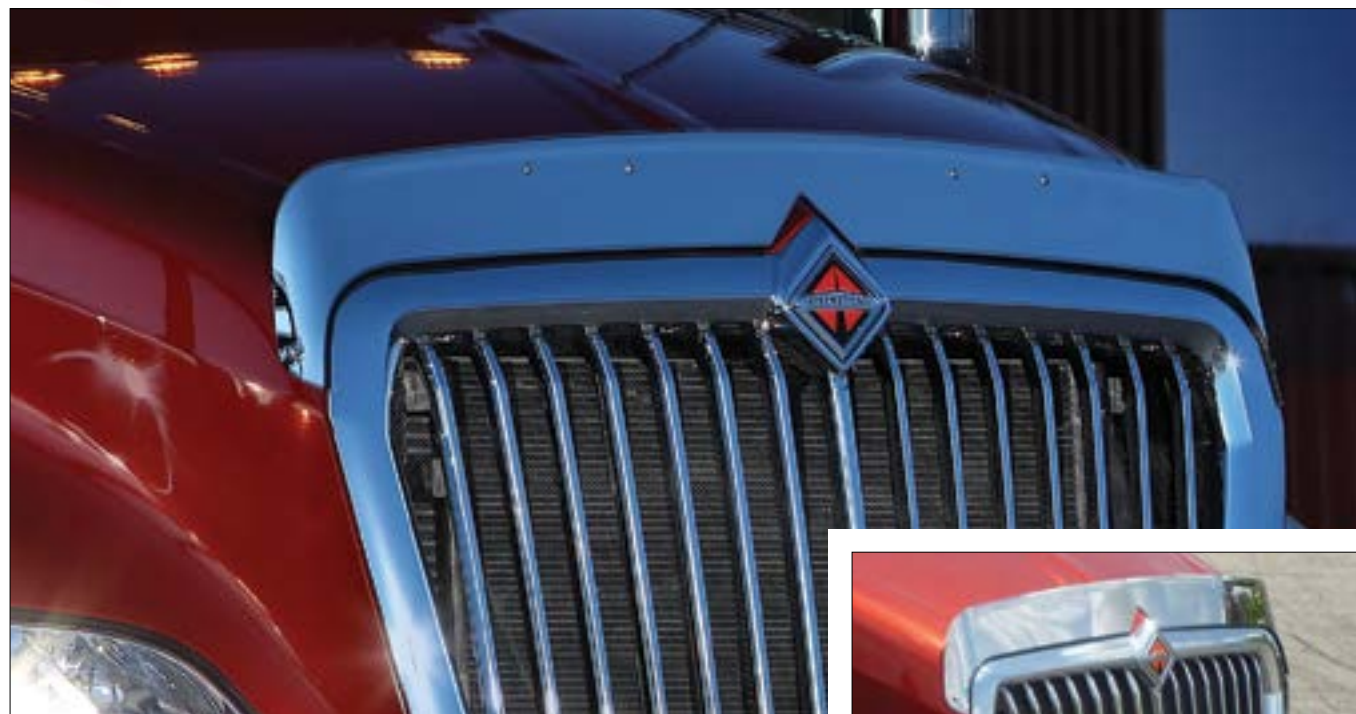
SUNVISORS

There are lots of places you want to soak in the sun - but your cab isn't one of them. Our extended sunvisors help keep the cab cooler while reducing eye strain. OEM replacement, made of durable stainless steel. Some brackets included. Hardware included.

5 X2AG2 LED OEM REPLACEMENT 13" FACE	DN2241
5 X2ACG2 LED OEM REPLACEMENT 13" FACE	DN2242
5 OEM LIGHT HOLES OEM REPLACEMENT 13" FACE	DN2260



DN2242



BUG DEFLECTOR

Helps protect the hood and windshield from rocks and road debris. Mounts behind grille. Drilling of mounting holes required. All mounting hardware included. Constructed of high-quality 304 stainless steel. Built in hood tilt handle. LIFETIME GUARANTEE AGAINST BREAKAGE.

BUG DEFLECTOR (BUILT IN HOOD TILT HANDLE)	DN2363
-------------------------------------------	--------



DN2364



DN2365



DN2517



DN2413



DN2516



DN2414

BUMPER SCREENS

A stainless steel replacement for the OEM version. Available with or without fog light cutouts. Sold individually. Hardware included.

WITH FOG LIGHT CUTOUTS - REPLACES 4075442C1	DN2364
WITHOUT FOG LIGHT CUTOUTS - REPLACES 4075441C1	DN2365
WITH FOG LIGHT CUTOUTS - REPLACES 4075442C1 - WITH WINGMAN CUTOUT	DN2517
WITHOUT FOG LIGHT CUTOUTS - REPLACES 4075441C1 - WITH WINGMAN CUTOUT	DN2413
WITH FOG LIGHT CUTOUTS - REPLACES 4075442C1 - WITH LT CUTOUT	DN2516
WITHOUT FOG LIGHT CUTOUTS - REPLACES 4075441C1 - WITH LT CUTOUT	DN2414



FENDER GUARDS

The best defense against road debris and the effects of high mileage wear and tear. Below headlight fender guards, attach using supplied hardware. Sold in pairs.

LT SERIES

DN2375



REAR FAIRING TRIM

Help protect the paint from scuffs and scratches. Attaches to the rear portion of the fairing panel using supplied 3M two-sided tape and hardware. Sold in pairs.

REAR FAIRING TRIM

DN2379



BUMPER TRIM

Add stainless steel accents to the front bumper. The trim pieces follow the contour and shape of the bumper. Attaches using supplied 3M two-sided tape. Sold in a 4-piece set.

LT SERIES

DN2380



DN2362
(PASSENGER SIDE)



DN2362
(DRIVER SIDE)



DN2361

KICK PLATES

Greatly reduces scuffs to the painted surface. Attaches using supplied 3M two-sided tape and hardware. Sold in pairs.

UPPER STEP	DN2362
LOWER STEP	DN2361



DN2370

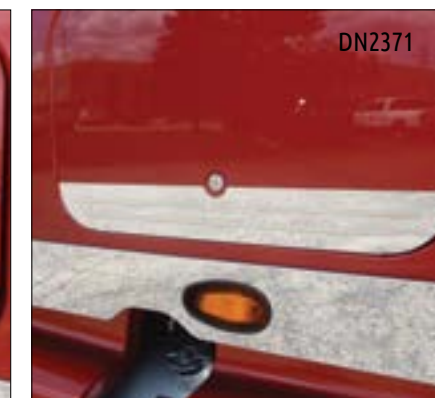
BUNK STORAGE DOOR PANEL

Easily install to the outside of the access panel in the sleeper. Help to protect the paint from scuffs, scrapes and debris damage. Attaches using supplied hardware and 3M two-sided tape. Sold in pairs.

ETCHED LINES	DN2370
WITH CUTOUTS	DN2369
"PUSH" WITH ETCHED LINES	DN2371



DN2369



DN2371



LICENSE PLATE HOLDER

Designed to hold a single plate. Attaches to the front bumper using supplied hardware. Plate bezel included. Sold individually.

SINGLE TAG

DN2368



DN2306

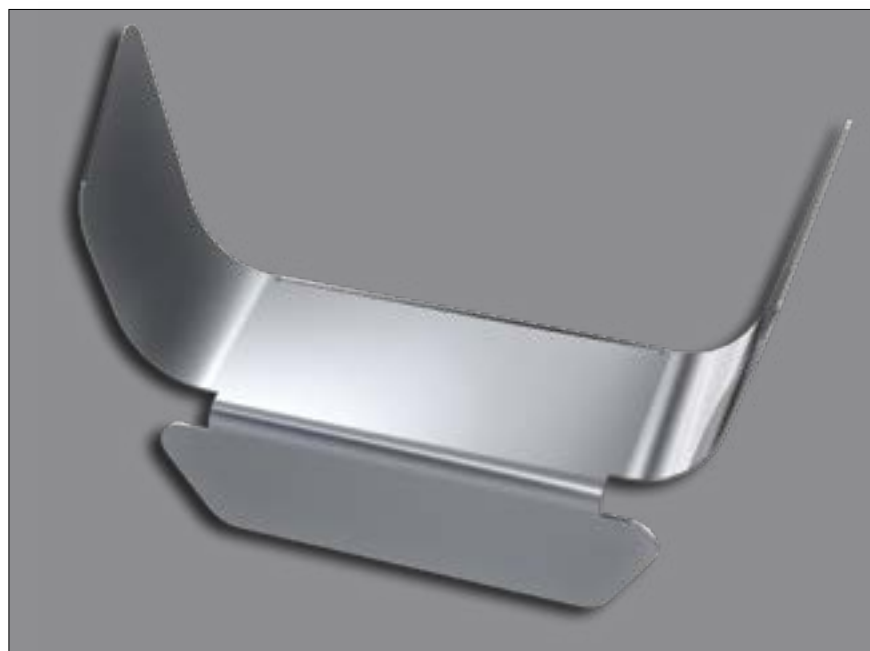
REAR FRAME COVER

Add that stainless steel look and protection to the rear frame. Sold individually, the rear frame cover fastens using supplied hardware.

LT, PROSTAR & LONESTAR MODELS - PLAIN DN2306

LT, PROSTAR & LONESTAR MODELS - ETCHED 'INTERNATIONAL' DN2520

LT MODELS - ETCHED 'LT' DN2519



FUEL FILLER GUARD

Attaches to the cutout area at the fuel fill location in the fairing/tank cover trim. Designed to protect the paint from scuffs and scratches. Attaches using supplied 3M two-sided tape. Sold in pairs.

FUEL FILLER GUARD

DN2381



DN2360



DN2373



DN2374



DN2377

UNDER DOOR WINDOW TRIM

Adds a stainless steel shine under the driver and passenger side windows. Sold in pairs. Attaches using supplied 3M two-sided tape.

LARGE - PLAIN DN2360

SMALL - PLAIN DN2373

SMALL - WITH INTERNATIONAL CUTOUT DN2374

SMALL - WITH INTERNATIONAL ETCHED DN2377



DN2372

SKIRTING KITS

Designed for the LT Series. Kit includes cab, transition, 73" sleeper and extender skirts for 22" extender. Hardware included. DN2372 also includes lights and harnesses. Sold as a set.

CAB/TRANSITION/73" SLEEPER/EXTENDER (FOR 22" EXTENDER) KIT - PLAIN (NO LIGHTS) DN2415

CAB/TRANSITION/73" SLEEPER/EXTENDER (FOR 22" EXTENDER) KIT - UNDERLIT (5/3/7/3) 3/4" ROUND AMBER CLEAR LED DN2372



DN2372



DN2529



DN2530

CAB SKIRTS - LT DAYCAB

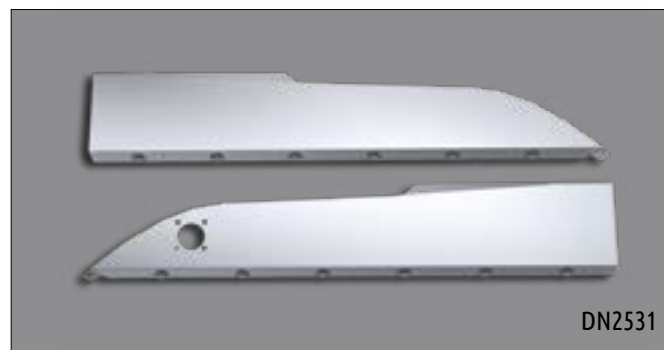
Designed for the LT daycab. Includes lights and harnesses. Sold in pairs. Driver side skirts has a block heater cutout.

PLAIN DN2528

X2AG2 LED (3) DN2530

X2ACG2 LED (3) DN2529

UNDERLIT - 3/4" ROUND AMBER CLEAR LED (6) DN2531



DN2531

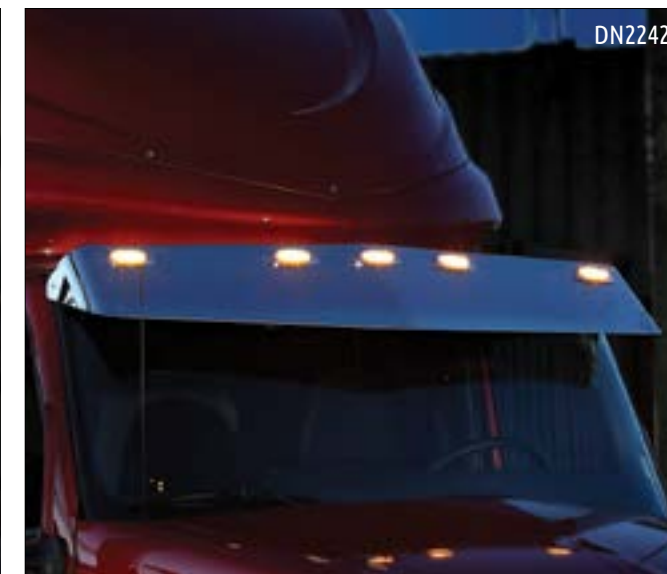


BUG DEFLECTORS

The original durable stainless steel bug deflectors. Drilling of mounting holes through the fiberglass hood is required. Provides a classy and more forgiving alternative to plastic models. **GUARANTEED FOR LIFE NOT TO BREAK, RUST OR CORRODE.**

HX520 (2016-2020), 9900 SERIES, 5900i SFA	DN2006
9200, 9400 MODEL	DN2020
4000 SERIES 2002+, MV MODELS	DN2049**
WORKSTAR 7600 (NOT FOR SLOPED HOOD MODELS) 2008	DN2246
PROSTAR	DN2261**
LONESTAR	DN2305**
8600 TRANSTAR 2013+	DN2320
PAYSTAR 5900 SBA (121" BBC*) 2011+	DN2324
PAYSTAR 5900 SBA (124" BBC*) 2011+	DN2325
WORKSTAR 7600 SBA 6X4 2013+	DN2326**
TERRASTAR 2012+	DN2332
HX615, HX620 (2016-2020)	DN2338**
LT SERIES	DN2363**

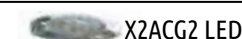
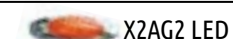
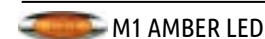
*BBC = THE DISTANCE FROM FRONT BUMPER TO THE BACK OF CAB
**WITH BUILT IN GRAB HANDLE FOR HOOD TILTING



SUNVISORS

There are lots of places you want to soak in the sun - but your cab isn't one of them. Our extended sunvisors help keep the cab cooler while reducing eye strain. OEM replacement. Made of durable stainless steel. Some brackets included. Hardware included.

9900 SERIES - SUNVISOR INSERT	DN2013
2600, 4000 & 8000 SERIES BUSINESS CLASS (1989-2002)	DN2021
4000 & 7000 SERIES 2003+	DN2042
5600i SERIES 2001+	DN2043
9900 & 5900 SERIES - 13" DEEP, OEM LIGHT HOLES	DN2050
9900 & 5900 SERIES - 13" DEEP, PLAIN	DN2102
9900 & 5900 SERIES - 13" DEEP, 5 X2AG2 LED LIGHTS	DN2052
9900 & 5900 SERIES - 13" DEEP, 5 X2ACG2 LED LIGHTS	DN2103
LT, RH, PROSTAR & LONESTAR MODELS - 14.9" DEEP, 5 X2AG2 LED LIGHTS, OEM REPLACEMENT	DN2241
LT, RH, PROSTAR & LONESTAR MODELS - 14.9" DEEP, 5 X2ACG2 LED LIGHTS, OEM REPLACEMENT	DN2242
LT, RH, PROSTAR & LONESTAR MODELS - 14.9" DEEP, 5 OEM LIGHT HOLES, OEM REPLACEMENT	DN2260
HX, 9900, 5900, DURASTAR & WORKSTAR MODELS - 13" FACE, 5 M1 AMBER LED LIGHTS, OEM REPLACEMENT	DN2355
HX, 9900, 5900, DURASTAR & WORKSTAR MODELS - 13" FACE, 5 M1 AMBER CLEAR LED LIGHTS, OEM REPLACEMENT	DN2356



B
U
G
D
E
F
L
E
C
T
O
R
S

S
U
N
V
I
S
O
R
S

FENDER GUARDS

The best defense against road debris and the effects of high mileage wear and tear. Sold in pairs.

9900 SERIES	DN2008
PROSTAR	DN2264
5900i SBA 121" BBC - FENDER GUARD & GRILL TRIM	DN2311*
HX615 & HX620 (2016-2020)	DN2337
LT SERIES	DN2375
HX520 (2016-2020)	DN2378

* 3 PIECE SET



BUMPER SCREEN & GRILLE GUARDS

Prevents road debris from entering the engine. Hardware included.

LT SERIES - WITH FOG LIGHT CUTOUTS - REPLACES 4075442C1	DN2364
LT SERIES - WITHOUT FOG LIGHT CUTOUTS - REPLACES 4075441C1	DN2365
LT SERIES - WITH FOG LIGHT CUTOUTS - REPLACES 4075441C1 - WITH WINGMAN CUTOUT	DN2517
LT SERIES - WITHOUT FOG LIGHT CUTOUTS - REPLACES 4075441C1 - WITH WINGMAN CUTOUT	DN2414
LT SERIES - WITH FOG LIGHT CUTOUTS - REPLACES 4075441C1 - WITH LT CUTOUT	DN2516
LT SERIES - WITHOUT FOG LIGHT CUTOUTS - REPLACES 4075441C1 - WITH LT CUTOUT	DN2413
DURASTAR 4300 SBA 4X2 & 4400 MODELS	DN2333
PROSTAR - NEW STYLE BUMPER, 2012+	DN2315
PROSTAR - ORIGINAL STYLE BUMPER, PRE-2012	DN2300



CAB SKIRTS, SLEEPER SKIRTS & SKIRTING KITS

HX SERIES SKIRTING - SEE PAGE XX
LT SERIES SKIRTING - SEE PAGE XX

CAB SKIRTS - 9900 & 9400 MODELS

OEM REPLACEMENT, 33.625" LONG, BLOCK HEATER CUTOUT, PLAIN (NO LIGHTS)	DN2033
OEM REPLACEMENT, 33.625" LONG, BLOCK HEATER CUTOUT, X2AG2 LED LIGHTS (3)	DN2037
OEM REPLACEMENT, 22.625" LONG, PLAIN (NO LIGHTS)	DN2044
OEM REPLACEMENT, 22.625" LONG, X2AG2 LED LIGHTS (3)	DN2048

SLEEPER SKIRTS - 9900 MODELS WITH 72" SLEEPERS

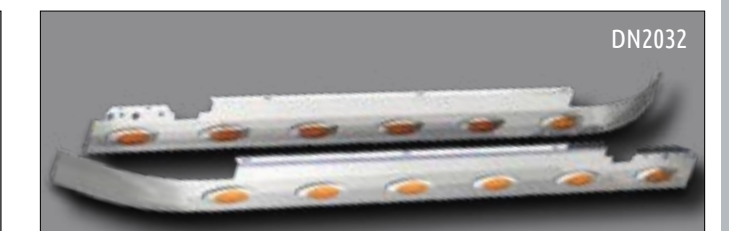
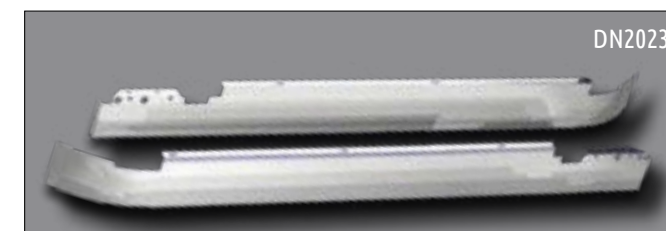
SIDE MOUNT EXHAUST - OEM REPLACEMENT, PLAIN (NO LIGHTS)	DN2023
SIDE MOUNT EXHAUST - OEM REPLACEMENT, X2AG2 LED LIGHTS (6)	DN2031
REAR MOUNT EXHAUST - OEM REPLACEMENT, PLAIN (NO LIGHTS)	DN2024
REAR MOUNT EXHAUST - OEM REPLACEMENT, X2AG2 LED LIGHTS (6)	DN2032

SKIRTING KITS - PROSTAR (122" BBC) WITH 56" SLEEPER & EXTENDERS

CAB, TRANSITION, SLEEPER, EXTENDER - PLAIN (NO LIGHTS), OEM LIGHT HOLES, BLOCK HEATER CUTOUT	DN2299
CAB, TRANSITION, SLEEPER, EXTENDER - PLAIN (NO LIGHTS), BLOCK HEATER CUTOUT	DN2298
CAB, TRANSITION, SLEEPER, EXTENDER - PLAIN (NO LIGHTS), NO BLOCK HEATER CUTOUT	DN2376
CAB, TRANSITION, SLEEPER, EXTENDER - X2AG2 LED LIGHTS (2/0/3/0), BLOCK HEATER CUTOUT	DN2296
CAB, TRANSITION, SLEEPER, EXTENDER - X2AG2 LED LIGHTS (2/0/3/0), BLOCK HEATER CUTOUT	DN2297

SKIRTING KITS - 2014+ PROSTAR (122" BBC) WITH 73" SLEEPER & EXTENDERS

CAB, TRANSITION, SLEEPER, EXTENDER - PLAIN (NO LIGHTS), OEM LIGHT HOLES, BLOCK HEATER CUTOUT, FUEL FILLER CUTOUT	DN2331
CAB, TRANSITION, SLEEPER, EXTENDER - X2AG2 LED LIGHTS (2/0/4/0), BLOCK HEATER CUTOUT, FUEL FILLER CUTOUT	DN2329
CAB, TRANSITION, SLEEPER, EXTENDER - X2AG2 LED LIGHTS (2/0/4/0), BLOCK HEATER CUTOUT, FUEL FILLER CUTOUT	DN2330



FENDER & GRILLE GUARDS

CAB & SLEEPER SKIRTS


AIR CLEANER LIGHT BARS

Accentuates air cleaners. For use with air cleaner fairings. Lights, harnesses and hardware are included. Sold in pairs.

FRONT	
HX620 (2016-2020) - M3 AMBER LED (6)	DN2353*
HX620 (2016-2020) - M3 AMBER CLEAR LED (6)	DN2358*
HX520 (2016-2020) - M3 AMBER LED (6)	DN2382*
HX520 (2016-2020) - M3 AMBER CLEAR LED (6)	DN2383*
9900 SERIES - X3AG2 LED (6)	DN2130
9900 SERIES - X3ACG2 LED (6)	DN2131
9900 SERIES - X3AG3 LED (7)	DN2079*
9900 SERIES - X3ACG2 LED (7)	DN2105*
9900 SERIES - 2" ROUND STARBURST LED (6)	DN2145
9900 SERIES - 2" ROUND STARBURST LED (6)	DN2076*
9900 SERIES - 2" ROUND LIGHT HOLES (6)	DN2128
9900 SERIES - 2" ROUND LIGHT HOLES (6)	DN2077*

*TO BE USED WITH AIR CLEANER FAIRINGS/SHROUDS

REAR	
HX620 (2016-2020) - M3 RED LED (6)	DN2354
HX620 (2016-2020) - M3 RED CLEAR LED (6)	DN2357
HX520 (2016-2020) - M3 RED LED (6)	DN2384
HX520 (2016-2020) - M3 RED CLEAR (6)	DN2385
9900 SERIES - X3RG2 LED (7)	DN2110
9900 SERIES - X3RCG2 LED (7)	DN2108
9900 SERIES - 2" ROUND STARBURST LED (6)	DN2111
9900 SERIES - 2" ROUND LIGHT HOLES (6)	DN2112

 M3 AMBER LED	 M3 AMBER CLEAR LED
 X3AG2 LED	 X3ACG2 LED
 M3 RED LED	 M3 RED CLEAR LED
 X3RG2 LED	 X3RCG2 LED

AIR CLEANER FAIRING

Conceals the air intake hoses. Attaches to the side of the hood in front of the air cleaner. Sold in pairs. Hardware included.

9900i, HX520 (2016-2020)	DN2010
5900	DN2328
HX620 (2016-2020)	DN2359

FRESH AIR INTAKE COVER

For International models with air intakes. Attaches using supplied hardware. Some drilling is required. Sold individually

FRESH AIR INTAKE COVER	DN2038
------------------------	--------



LICENSE PLATE HOLDERS

Sold individually. License plate bezels are included. For the bumper face license plate holders, they attach using existing bumper bolts. Under bumper license plate holders are hinged to hang under the bumper.

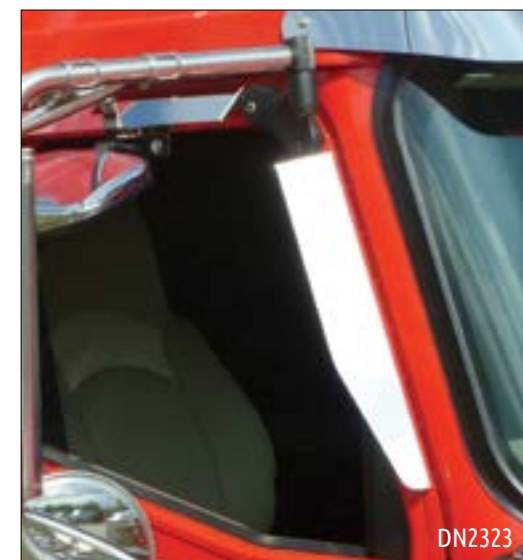
9900 SERIES - BUMPER FACE, 2 PLATES	DN2040
9900 SERIES - BUMPER FACE, 3 PLATES	DN2041
UNIVERSAL - HINGED UNDER BUMPER, 1 PLATE	DN2197
UNIVERSAL - HINGED UNDER BUMPER, 2 PLATES	DN2198
UNIVERSAL - HINGED UNDER BUMPER, 3 PLATES	DN2199
PROSTAR 2012+ (NEW STYLE BUMPER) - 1 PLATE	DN2316
PROSTAR 2012+ (NEW STYLE BUMPER) - 2 PLATES	DN2317
LT SERIES	DN2368
HX615, HX620 MODELS - 37" WIDE, TAPERED ENDS	DN2352



DOOR SILL/SCUFF PLATES

Door sill/scuff plates designed for International models. Sold in pairs. Each plate measures 23.5" long by 2.5" wide by 0.25" high. Attaches using supplied 3M two-sided tape.

PLAIN	DN2016
WITH ETCHED INTERNATIONAL	DN2245



DOOR WINDOW SHADE

For 9200, 9400 and 9900 models. Attaches using supplied 3M two-sided tape and hardware. Sold as a 4 piece set.

9200, 9400 & 9900 MODELS	DN2323
--------------------------	--------

DOOR WINDOW DEFLECTOR

The door window deflector measures 20.5" x 3.25" wide. Attaches using supplied 3M two-sided tape. Sold in pairs

9900 & HX MODELS	DN2003
------------------	--------



BACK UP LIGHT SHIELD & BRACKETS

Attaches using existing hardware. Sold in pairs.

UNIVERSAL - SHIELD (BOTH ENDS OPEN) DN2188

UNIVERSAL - BRACKETS DN2187



LOWER MIRROR ARM BRACKET COVERS

Chromed plastic OEM replacement features embossed logo. Snaps in place of original cover. Sold in pairs.

HX & 9900 SERIES DN2255



REAR FRAME COVERS

Add that stainless steel look and protection to the rear frame. Sold individually, the rear frame cover fastens using supplied hardware.

9900 SERIES - OEM VERSION, ETCHED 'INTERNATIONAL' DN2249

PROSTAR MODEL - ETCHED 'PROSTAR' DN2265

PROSTAR, LONESTAR & LT MODELS - PLAIN DN2306

PROSTAR, LONESTAR & LT MODELS - ETCHED 'INTERNATIONAL' DN2520

LT MODELS - ETCHED 'LT' DN2519

LONESTAR - ETCHED 'LONESTAR' DN2302



DOOR WINDOW TRIM

Gives that stainless steel shine to the window. Designed for LoneStar, ProStar, 4000 and 7000 models. Must remove existing plastic trim. Attaches using supplied 3M two-sided tape. Sold in pairs. With UV protected urethane coat for added protection.

PLAIN DN2239

WITH COLOR LOGO DN2238



CENTER REAR LIGHT BOXES

Mounts to the underside of the frame. Measures 34" wide by 15" tall. Removable rear cover. Lights are included. Hardware and some wiring supplied. Universal.

WITH ROUND LIGHTS - WELDED & POLISHED DN2168

WITH OVAL LIGHTS - WELDED & POLISHED DN2169



DN2181

TRIM ACCENTS

Attach using supplied 3M two-sided tape.

EMBLEM - FLAMING EAGLE (28.9" LONG) - PAIR DN2181

BUNK VENT COVER & RING (4.875" WIDE X 11.875" LONG) - EACH DN2002

PROSTAR - HOOD LATCH INSERT - PAIR DN2266

LONESTAR - FENDER WHEEL WELL TRIM - 4 PIECE KIT DN2304



DN2304



CHROME CLIMATE CONTROL KNOBS

For 9000 and HX series models. Sold as a set of 3. Light indicator window. Replace OEM climate control knobs. Chromed plastic.

HX & 9900 SERIES DN2247

CUSTOM DEALERSHIP POSTERS

Custom posters are now available to help increase sales of stainless steel accessories! Available in 3 sizes - 24"x36", 30"x48" and 48"x96" - both portrait or landscape. Also available with or without accessory list. These posters are available to authorized International dealerships only. Contact one of our customer service representatives to order or learn more at 1-877-884-8555 or inquiries@dietersaccessories.com



- | | | | |
|--------|------------------------------------------------------|--------|-----------------------------------------------------------|
| DN2199 | LICENSE PLATE HOLDER | DN2386 | DEF TANK COVER |
| DN2001 | DOOR WINDOW DEFLECTOR | DN2391 | FRONT GRILLE |
| DN2389 | CAB SKIRTS M3 (4) AMBER LED LIGHTS | DN2394 | BUG DEFLECTOR |
| DN2382 | FRONT AIR CLEANER LIGHT BARS M3 (6) AMBER LED LIGHTS | DN2378 | FENDER GUARDS |
| DN2384 | REAR AIR CLEANER LIGHT BARS M3 (6) RED LED LIGHTS | DN2353 | SUNVISOR - OEM REPLACEMENT, 11" WIDE, W/ AMBER LED LIGHTS |
| DN2010 | AIR CLEANER SHROUD | | |



ACCESSORIES

ORIGINAL EQUIPMENT



DIETER'S

Our Reputation is Stainless!



OEM certified, owner operator approved...
Our stainless steel products are guaranteed to Outshine and Outlast.

dietersaccessories.com

1-877-884-8555

inquiries@dietersaccessories.com

COPYRIGHT © 2018, ALL RIGHTS RESERVED

VOLUME XII

All trademark, product names or logos cited or displayed herein are the property of their respective owners.